



CALL US FOR ALL YOUR HEARTLAND

ENGINEERED PRODUCTS



HEP provides heavy duty structural platform systems engineered to maximize safety and accessibility.

- Galvanized for all outdoor climates and applications
- Painted for indoor use
- Manufactured in Ohio
- Professional Engineering
- Custom Design and Layout
- Industries Served
 - Petroleum
 - Gas
 - Chemical
 - Wash Down
 - Food
 - ...and many more

Elevate your expectations and your results



PLATFORMS



STAIRCASES



MEZZANINES



CATWALKS



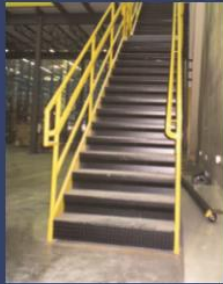
CROSSOVERS



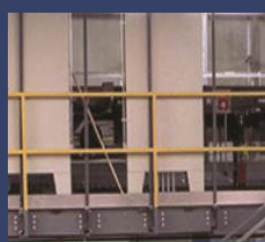
RAILINGS AND DECKING



PLATFORM ACCESSORIES



Stairs



Handrail



Ladders



Crossovers

Stairs

Heartland Engineered Products stairways are fabricated to be rugged and long lasting. Treads are furnished in black diamond plate up to 48" wide with bar grating available. One piece stringers are constructed of hot-rolled channel, with heavy duty handrails of 1 1/2" steel square tubing. Brackets for base and landing mounts as well, as all hardware is supplied.

Standard handrail and stringers are OSHA yellow, with other colors available.

Stairways are shipped unassembled but no field welding is required. We also offer options such as modesty panels, and top support columns for a free-standing stairway.

Handrail

Heartland Engineered Products 3-rail handrail is constructed of 1 1/2" square tubing and 2" square uprights spaced a maximum of 60" apart. All handrail is assembled in the field without welding. All needed hardware is included

We also offer welded railing to fit an opening. All panels are fully welded together and shipped in units.

This rail is constructed of 1 1/2" sq tubing, and has a continuous top rail along the panel length. The panels can be made in any length up to 20'. Field welding is generally required to join the sections if a smooth and continuous top rail is desired.

Ladders

Ladders are available in straight, steep ascent and caged units. Ladder side stringers are constructed of 3" channel with welded 3/4" dia. round rungs. Cages are constructed of 1/4" x 2" ribs with a bottom loop flared out for easy entry / exit. Standard units up to 30' available.

Crossovers

Crossovers provide personnel access across conveyors or other equipment. Units feature complete stairsets and welded walk-over platform available with grating, plate or wood decking surface. Standard and special size units available.



PLATFORM ACCESSORIES

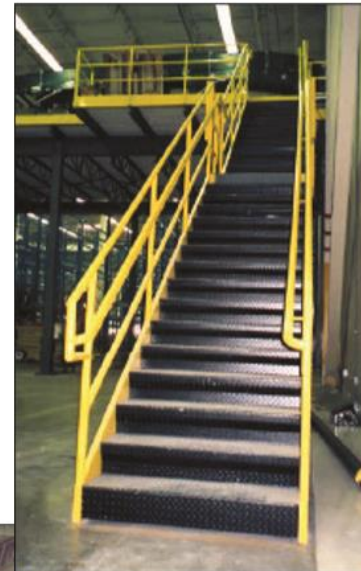
A STEP AHEAD ...

Stairways from Heartland Engineered Products are fabricated with constant use in mind. Our heavy-duty construction features 1-1/2" square tubing handrails welded to a one-piece structural channel stringer. Integrated brackets are included for base and landing mounts. If needed, a formed transition plate can be supplied to complete the installation. Formed 36" wide black diamond plate treads are included as standard to meet the closed riser requirements of the IBC code. To complete the IBC stairway, we provide an inner handrail made from 1-1/4" pipe that is easily installed once the stairway is completely assembled. To minimize potential damage and reduce transportation costs, HEP stairways are shipped "broken down" with all needed hardware for final assembly.

Stairways can be provided in a wide range of configurations and sizes, designed to meet your specific application. In addition to IBC, stairs can be provided to meet BOCA and OSHA as well as any specific municipal code you may have. It is important to remember to check with your local building authority before ordering a stairway to make sure all codes will be met.

Stairway Checklist -

- Does my local building code supersede IBC? Do I need to meet ADA requirements?
- What access shape do I need? Do I want the run to be Straight, "L" Shape or "U" Shape?
- Is a landing needed in the middle of the run and/or at the top? Code does not allow stairways to exceed 144" in height without the addition of a landing.
- How will stairway be connected? Do I need a transition plate or columns to make it self-supported?



IBC CODE STAIRWAY			
Deck Ht	# Treads	Weight	Overall Run
1'-3" - 1'-8"	2	235	1'-10"
1'-9" - 2'-4"	3	296	2'-9"
2'-5" - 2'-11"	4	360	3'-8"
3'-0" - 3'-6"	5	421	4'-7"
3'-7" - 4'-1"	6	489	5'-6"
4'-2" - 4'-8"	7	564	6'-5"
4'-9" - 5'-3"	8	638	7'-4"
5'-4" - 5'-10"	9	704	8'-3"
5'-11" - 6'-5"	10	763	9'-2"
6'-6" - 7'-0"	11	829	10'-1"
7'-1" - 7'-7"	12	891	11'-0"
7'-8" - 8'-2"	13	983	11'-11"
8'-3" - 8'-9"	14	1043	12'-10"
8'-10" - 9'-4"	15	1154	13'-9"
9'-5" - 9'-11"	16	1208	14'-8"
10'-0" - 10'-6"	17	1265	15'-7"
10'-7" - 11'-1"	18	1344	16'-6"
11'-2" - 11'-8"	19	1419	17'-5"
11'-9" - 12'-0"	20	1494	18'-4"

Send your application information to our inside sales group today!



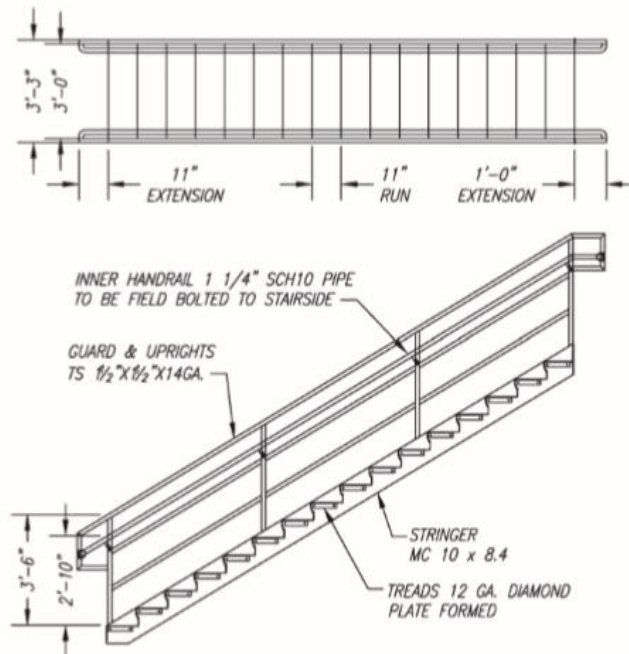
STAIRWAYS AND BUILDING CODES

Understanding national building codes is sometimes complicated, but we can help sort out the confusion. Once you determine your local building code requirements, let us help you interpret them and provide the stair configuration you need for your application.

Differences between most codes center on the maximum rise, run and width of the treads. Depending on the floor space available, the required run will determine the overall length of stairway you require. OSHA code has the shortest run allowed and may be what you need to fit in tight spaces. For normal occupancy limits, a standard 36" width tread will suffice but we also offer additional sizes as required.

Whatever your stairway application, determine your space requirements, your local building code requirements and send us a sketch of the area, so we can help in finding the best solution.

SAMPLE IBC STAIRWAY LAYOUT



Our expert applications team is ready to help you with any situation!



Contact us with your accessory needs.
We can help with your application.

PIVOT GATES



SWING GATES



SLIDE GATES



HANDRAIL



Pivot Gates

Heartland Engineered Products Pivot Gates are fabricated to be rugged and long lasting. Available in two sizes for single and double drop pallet applications. Solid, balanced design allows easy gate lifting operation. When one side opens the other is closed. Gates are constructed of heavy duty of 1 1/2" steel square tubing. All hardware is supplied. Gates are shipped unassembled, no field welding required. Painted Safety Yellow for high visibility.

Swing Gates

Heartland Engineered Products Swing Gates are a bi-parting gate and available in 4', 5', 6', and 8', lengths. Designed to be used with standard 3 rail and 2 rail handrail. The gates are designed for a surface mount application. Constructed of 1 1/2" square tubing, with a spring loaded hinge to swing inward for added safety. Locking hasps and kick plate are included. Impact plates are available if needed. Painted Safety Yellow for high visibility.

Slide Gates

Heartland Engineered Products Slide Gates are available in 4', 5', and 6' lengths. These gates are equipped with rollers and locking hasps. Constructed of 1 1/2" square tubing, they are designed to be used with standard 3 rail or 2 rail handrail. Solid, balanced design allows easy gate sliding and operation. All hardware is included. They are assembled in the field without welding. Painted Safety Yellow for high visibility.

Handrail

Heartland Engineered Products 3 rail handrail is constructed of 1 1/2" square tubing and 2" square uprights spaced a maximum of 60" apart. All handrail is assembled in the field without welding. All hardware is included.

We also offer welded railing to fit an opening. All panels are fully welded together and shipped in units. This rail is constructed of 1 1/2" square tubing, and has a continuous top rail along the panel length. The panels can be made in any length up to 20'. Field welding is generally required to join the sections if a smooth and continuous top rail is desired. Painted Safety Yellow.